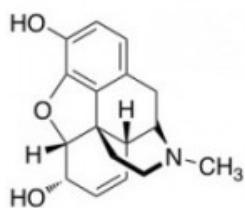
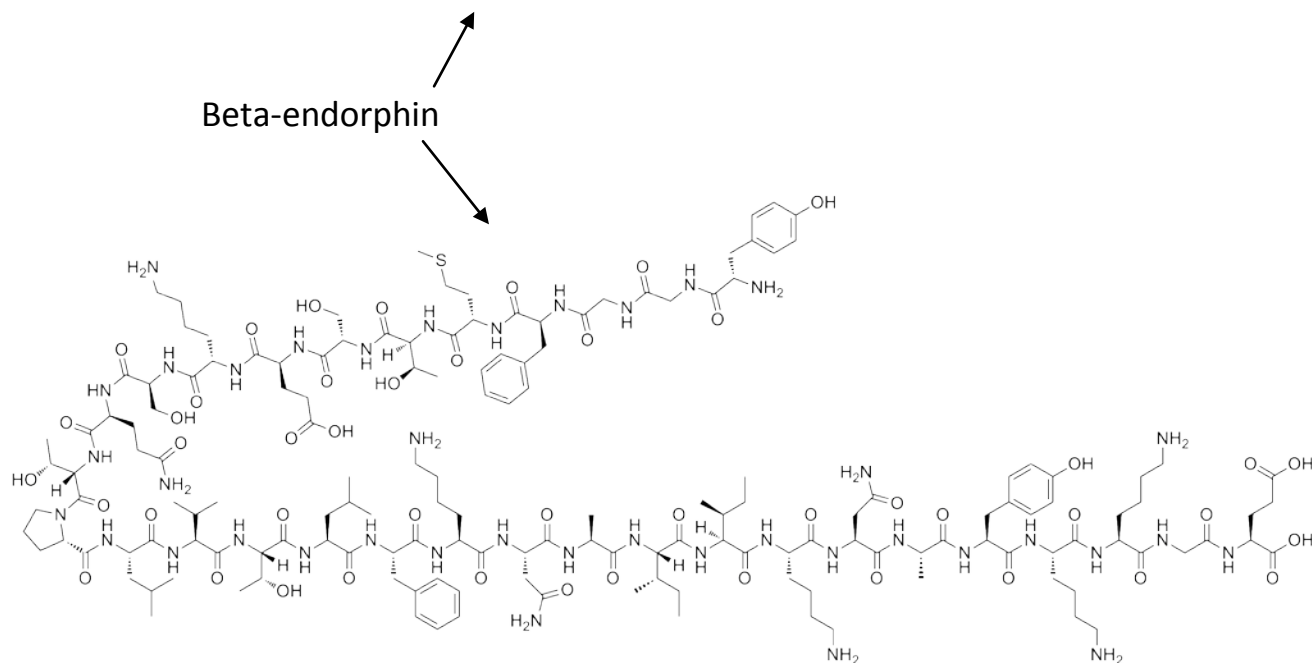




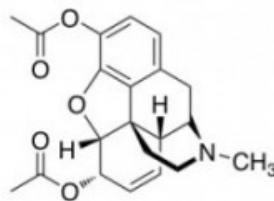
**Beta - Endorphin**.... is a 31 amino acid long neuropeptide that acts as an analgesic in the body to numb or dull pains. That is the reason why humans start to feel better immediately after an acute physical trauma even though the symptoms are still present. The reason the pain dulls is because it binds to and activates opioid receptors.  $\beta$ -Endorphin has approximately 80 times the analgesic potency of morphine. Heroin is an acetylated form of morphine.

Tyr-Gly-Gly-Phe-Met-Thr-Ser-Glu-Lys-Ser-Gln-Thr-Pro-Leu-Val-Thr-Leu-Phe-  
Lys-Asn-Ala-Ile-Ile-Lys-Asn-Ala-Tyr-Lys-Lys-Gly-Glu.

Beta-endorphin



morphine



heroin